

## DK 15/T-EN54-PG



- High sound pressure level
- Weather-proof
- BS 5839



EN 54-24:2008  
Ref. Nr.: 003-13  
ID-Code: SAA-LS03  
1438-CPR-0242

ic audio GmbH, Boehringerstraße 14a,  
D-68307 Mannheim, Germany

CE-Symbol gemäß Richtlinie 93/68EWG

The 15W powered speaker is equipped with a 100V line transformer with 4 power adjustments, also low-impedance operation (20 ohms) is possible. The impact-resistant ABS housing UL94V0 in RAL 7035 guarantees long-term stability. For additional reliability, a ceramic block and a thermal fuse are provided.

The speaker is also secured with the high protection class IP 66 against the security risks of environmental influences. The speaker is compliant with the British Standard BS 5839, Part 8.

The PG11 cable glands on the back of the speaker allow quick and easy connection.

Included is a U-shaped, stainless steel universal mount for flexible installation. Optionally available is a mast bracket (MB) for approx. 90-200 mm mast diameter.

To operate the product according to EN 54-24, an equalizer has to be used as described in the user manual.

**Technical Data (Electrical)**

Description	DK 15/T-EN54-PG
Power	15/7,5/3,75/1,9 (20) W
Impedance (100V)	667/1333/2667/5263 ohm
Frequency Range	677 - 5.400 Hz
Frequency Response	300 - 13.800 Hz
SPL IEC268-5, 1W/1m	95,0 dB
SPL EN54-24, Pmax/4m	93,0 dB
Sensitivity EN54-24, 1W/4m	83,0 dB
Sensitivity EN54-24, 1W/1m	95,3 dB
Dispersion -6dB, 500Hz	h/v 360°
Dispersion -6dB, 1KHz	h/v 110°
Dispersion -6dB, 2KHz	h/v 70°
Dispersion -6dB, 4KHz	h/v 40°

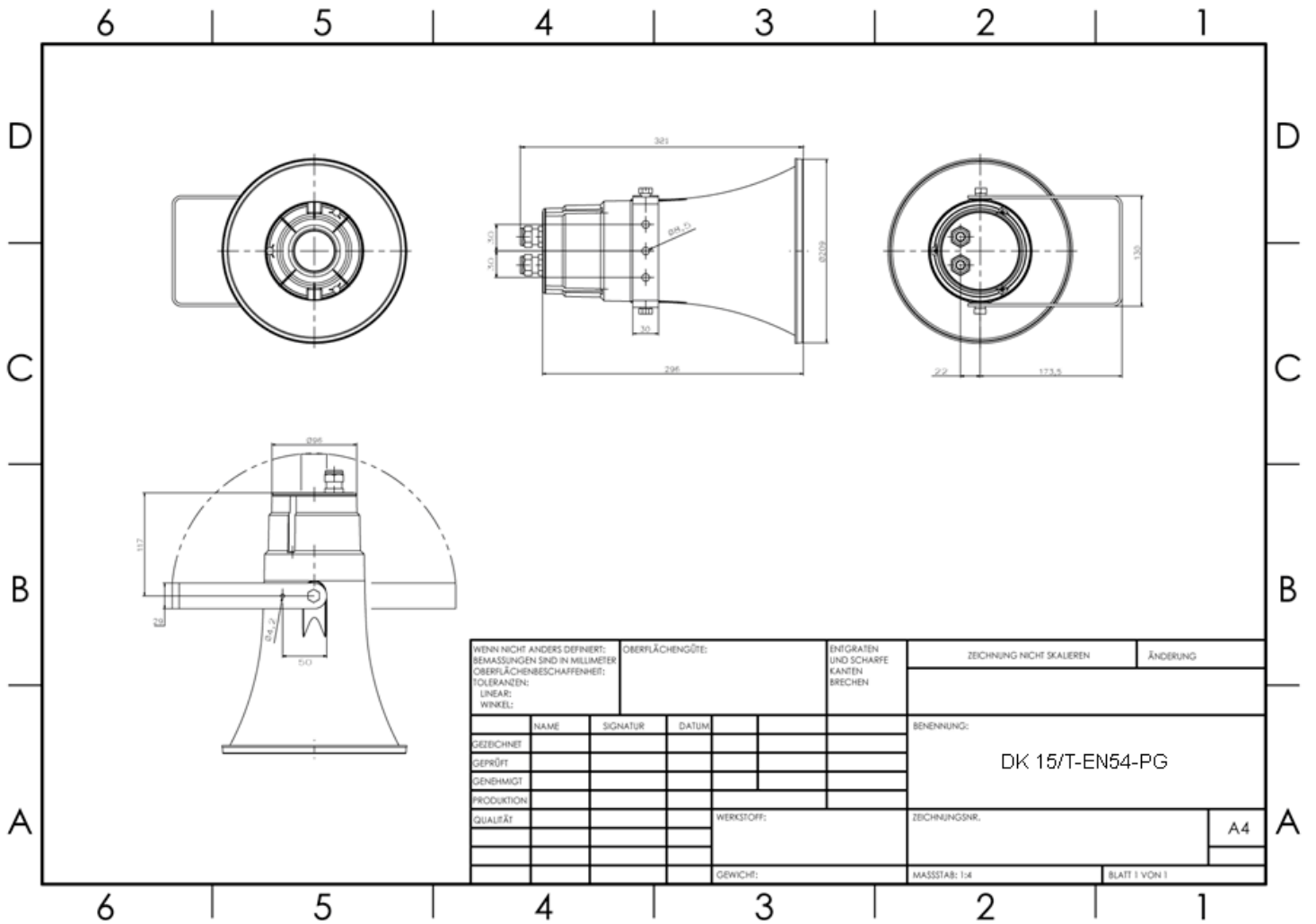
**Technical Data (Mechanical)**

Dimensions	209x321 mm
IP Rating	IP66
Weight (net)	2,08 kg
Temperature range	-25 / +70 C°
Mounting	Mounting bracket
Connector	ceramic block
Terminal diameter	3,2 mm
Maximum cable passage	8mm <sup>2</sup>
Colour	RAL 7035

**Product Attributes**

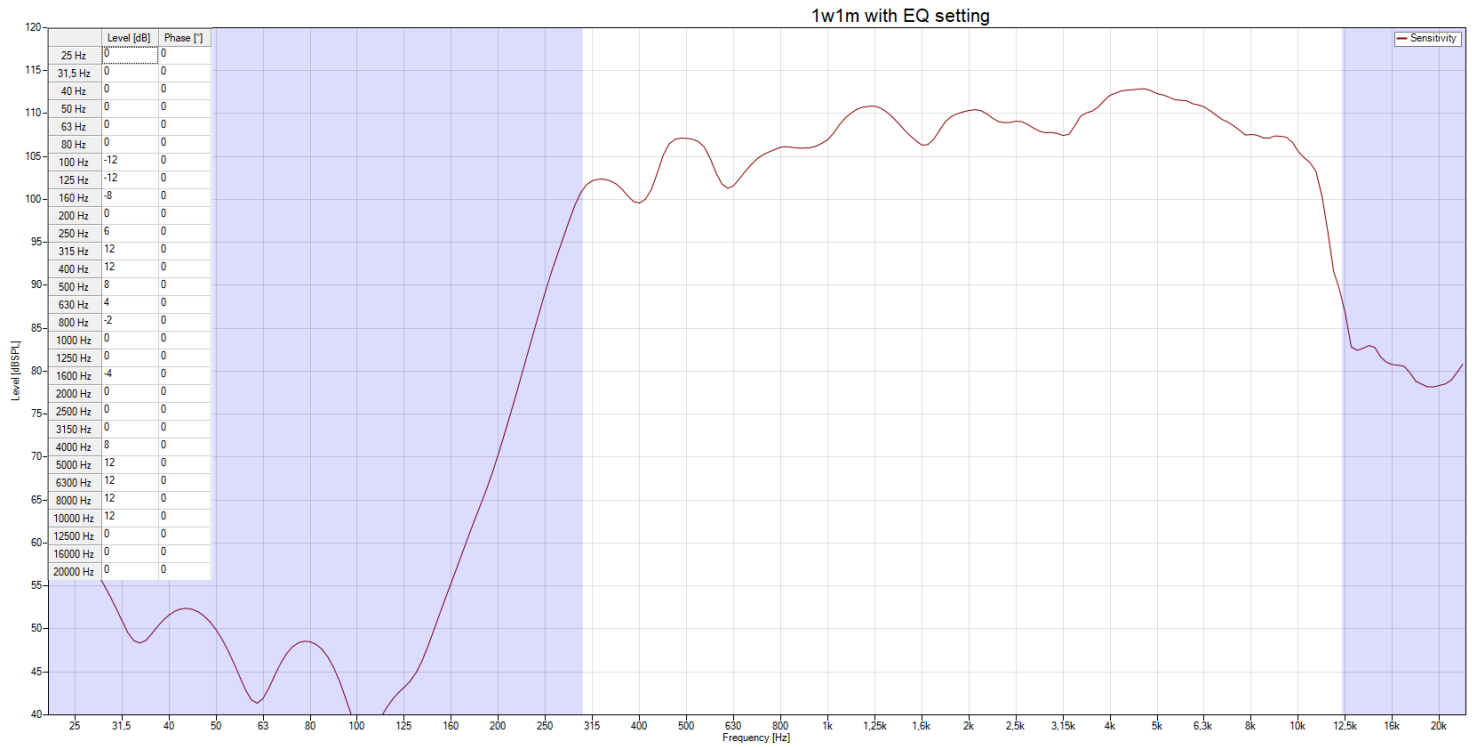


Technical Drawing

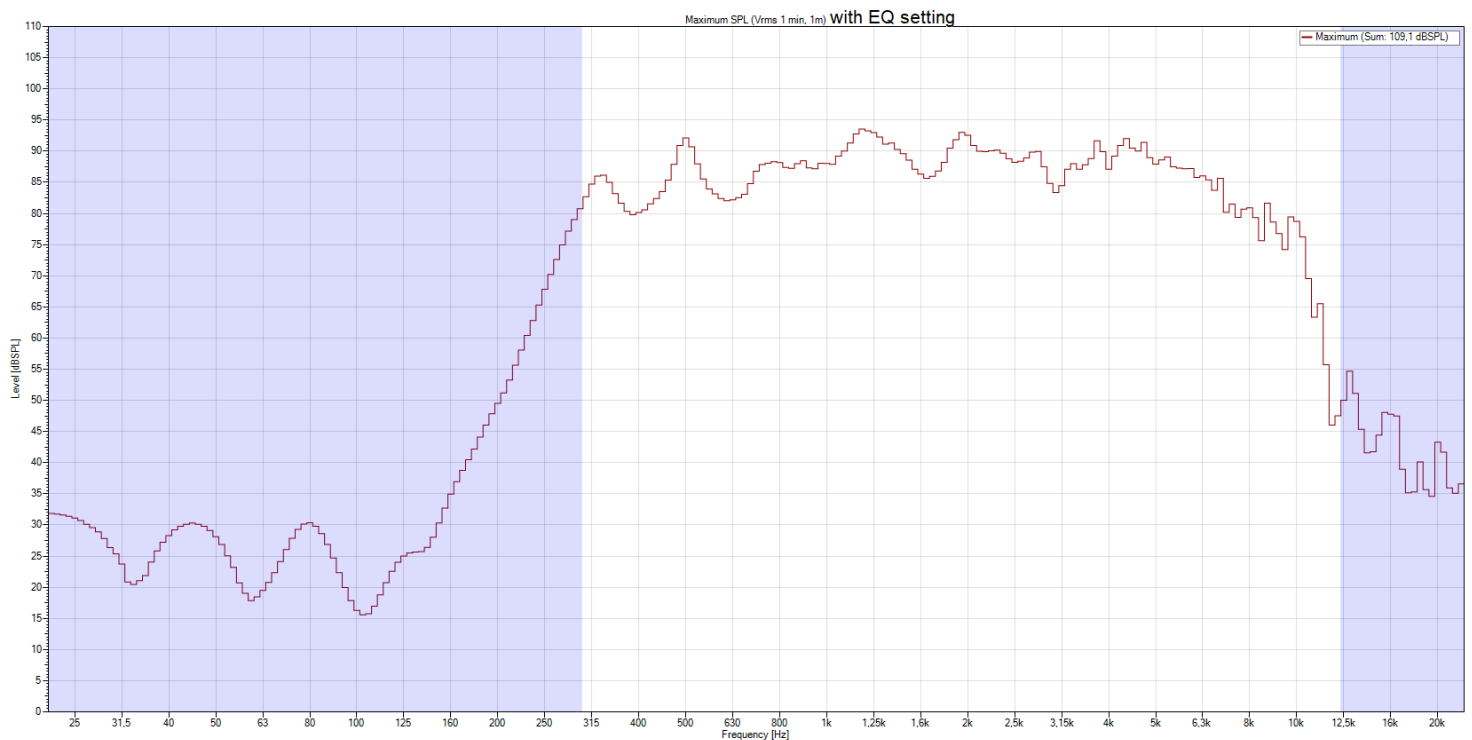


## Frequency Response Diagram

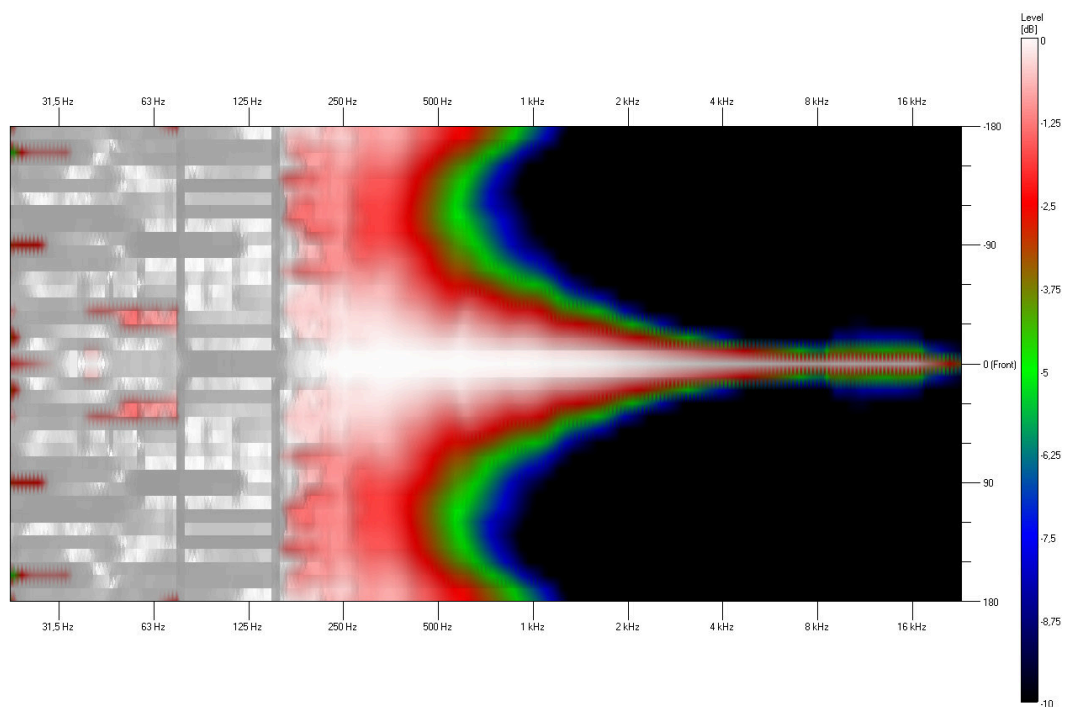
### Sensitivity



### SPL Max

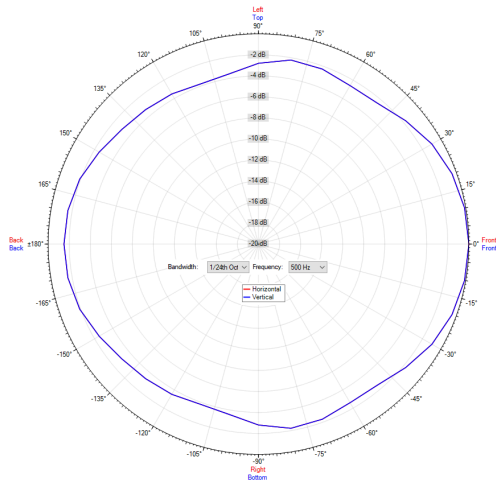


**Isobar**

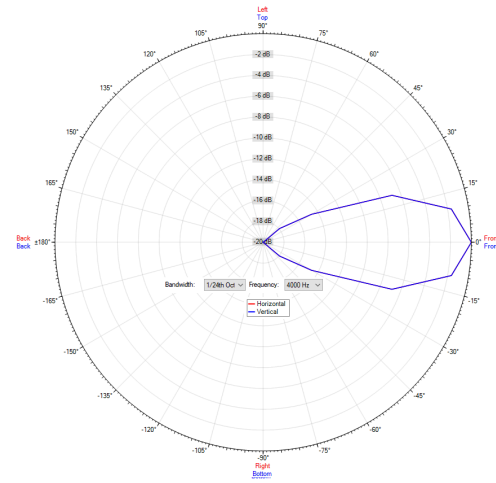


## Polar Diagram

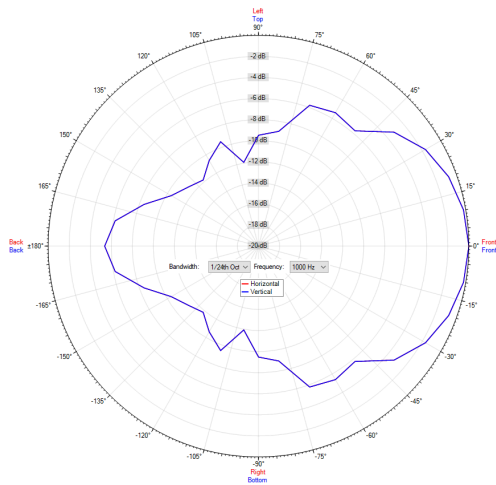
Polar Diagram 500Hz



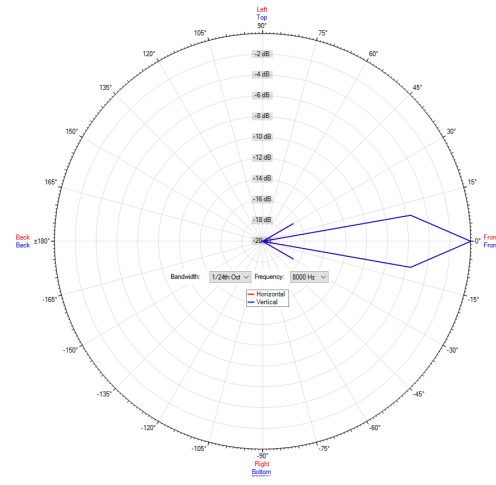
Polar Diagram 4000Hz



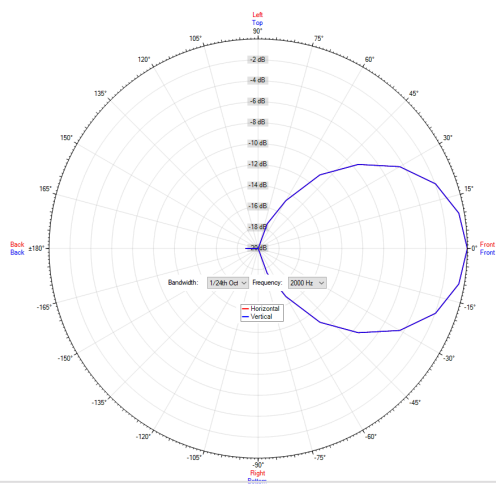
Polar Diagram 1000Hz



Polar Diagram 8000Hz



Polar Diagram 2000Hz



ic audio loudspeakers are tested and classified according to the IEC standard 60529 (degree of protection by enclosure) against the penetration of foreign objects and moisture. The classification is conforming to standards through characterization with a fixed code. This code consists of the letters IP (International Protection) followed by two digits. The first digit indicates the degree of protection against dust and the second digit the degree of protection against water. Please note that the testing of the products has been carried out in laboratory conditions which are not always 100% comparable with the conditions of different installation environments. This protection can be reduced due to normal wear and tear depending on the installation environment.

RoHS compliant (2011/65/EU)

The IP rating specified is based on ic audio test results, not on CNBOP-PIB test results. Certification only verifies the minimum requirements for EN54-24 compliance.



**Article Nr.:** 20205824-PG  
**Packing Unit:** 8

